

**UNITED STATES OF AMERICA  
FEDERAL ENERGY REGULATORY COMMISSION**

RH energytrans, LLC

Docket No. CP18-6-000

**NOTICE OF INTENT TO PREPARE AN  
ENVIRONMENTAL ASSESSMENT FOR THE PROPOSED  
RISBERG LINE PROJECT, AND  
REQUEST FOR COMMENTS ON ENVIRONMENTAL ISSUES**

(November 21, 2017)

The staff of the Federal Energy Regulatory Commission (FERC or Commission) will prepare an environmental assessment (EA) that will discuss the environmental impacts of the Risberg Line Project involving construction, modification, and operation of facilities by RH energytrans, LLC (RH) in Crawford and Erie Counties, Pennsylvania and Ashtabula County, Ohio. The Commission will use this EA in its decision-making process to determine whether the project is in the public convenience and necessity.

This notice announces the opening of the scoping process the Commission will use to gather input from the public and interested agencies on the project. You can make a difference by providing us with your specific comments or concerns about the project. Your comments should focus on the potential environmental effects, reasonable alternatives, and measures to avoid or lessen environmental impacts. Your input will help the Commission staff determine what issues they need to evaluate in the EA. To ensure that your comments are timely and properly recorded, please send your comments so that the Commission receives them in Washington, DC on or before December 21, 2017.

If you sent comments on this project to the Commission **before** the opening of this docket on October 16, 2017, you will need to file those comments in Docket No. CP18-6-000 to ensure they are considered as part of this proceeding.

This notice is being sent to the Commission's current environmental mailing list for this project. State and local government representatives should notify their constituents of this proposed project and encourage them to comment on their areas of concern.

If you are a landowner receiving this notice, a pipeline company representative may contact you about the acquisition of an easement to construct, operate, and maintain the proposed facilities. The company would seek to negotiate a mutually acceptable agreement. However, if the Commission approves the project, that approval conveys with it the right of eminent domain. Therefore, if easement negotiations fail to produce an agreement, the pipeline company could initiate condemnation proceedings where compensation would be determined in accordance with state law.

RH provided landowners with a fact sheet prepared by the FERC entitled “An Interstate Natural Gas Facility On My Land? What Do I Need To Know?” This fact sheet addresses a number of typically asked questions, including the use of eminent domain and how to participate in the Commission’s proceedings. It is also available for viewing on the FERC website ([www.ferc.gov](http://www.ferc.gov)).

### **Public Participation**

For your convenience, there are three methods you can use to submit your comments to the Commission. The Commission encourages electronic filing of comments and has expert staff available to assist you at (202) 502-8258 or [FercOnlineSupport@ferc.gov](mailto:FercOnlineSupport@ferc.gov). Please carefully follow these instructions so that your comments are properly recorded.

- 1) You can file your comments electronically using the [eComment](#) feature on the Commission’s website ([www.ferc.gov](http://www.ferc.gov)) under the link to [Documents and Filings](#). This is an easy method for submitting brief, text-only comments on a project;
- 2) You can file your comments electronically by using the [eFiling](#) feature on the Commission’s website ([www.ferc.gov](http://www.ferc.gov)) under the link to [Documents and Filings](#). With eFiling, you can provide comments in a variety of formats by attaching them as a file with your submission. New eFiling users must first create an account by clicking on “[eRegister](#).” If you are filing a comment on a particular project, please select “Comment on a Filing” as the filing type; or
- 3) You can file a paper copy of your comments by mailing them to the following address. Be sure to reference the project docket number (CP18-6-000) with your submission:

Kimberly D. Bose, Secretary  
Federal Energy Regulatory Commission  
888 First Street NE, Room 1A  
Washington, DC 20426

In addition, the FERC environmental staff plans on attending RH-sponsored open houses in Conneaut, Ohio on December 5, 2017 and in Edinboro, Pennsylvania on December 6, 2017 to explain the Commission's environmental review process. If you are interested in attending, RH has requested that you RSVP at [www.rhenergytrans.com/rsvp](http://www.rhenergytrans.com/rsvp) or by calling (844) 315-0857.

### **Summary of the Proposed Project**

RH proposes to construct, modify, operate, and maintain a new interstate natural gas pipeline system located in Crawford and Erie Counties, Pennsylvania and Ashtabula County, Ohio. The Risberg Line Project would provide about 55 million standard cubic feet of natural gas per day to Dominion Energy Ohio and other prospective customers in the vicinity of the project.

The Risberg Line Project would consist of the following actions in Pennsylvania:

- minor modifications at the existing County Line Compressor Station in Erie County;
- installation of compression (approximately 1,600 horsepower, natural gas-fired), receipt metering, and appurtenant facilities at the existing (currently vacant) Meadville Compressor Station site in Crawford County;
- re-certification and use of an existing 12-inch-diameter pipeline extending 26.6 miles from the Meadville Compressor Station north to an existing valve set in Washington Township, Erie County, including construction of a new launcher/receiver;
- next to the Meadville Compressor Station, construction of a 650-foot lateral within the existing 12-inch-diameter pipeline right-of-way to move gas from the Tennessee Gas Pipeline Company, LLC system to the existing pipeline; and
- re-certification and use of a portion of an existing 8-inch-diameter pipeline extending from the 12-inch valve set west about 5.0 miles to a point in Elk Creek Township, Erie County (Line 10257), including construction of two new launcher/receivers.

In Pennsylvania and Ohio, the project would include:

- construction of 28.3 miles of new 12-inch-diameter pipeline from the west end of the recertified 8-inch-diameter pipeline to connect with Dominion Energy Ohio facilities located in North Kingsville, Ashtabula County, Ohio (Risberg Pipeline). The pipeline would be constructed in new right-of-way and include launcher/receiver facilities and mainline valves; and
- construction of a new meter station at the terminus of the new pipeline in North Kingsville, Ashtabula County, Ohio.

The general location of the project facilities is shown in appendix 1.<sup>1</sup>

### **Land Requirements for Construction**

Construction of the proposed facilities would disturb about 242 acres of land for the aboveground facilities, access roads, and the pipeline. Following construction, RH would maintain about 171 acres for permanent operation of the project's facilities; the remaining acreage would be restored and revert to former uses. Approximately 30 percent of the proposed new pipeline route parallels existing roads and railroads.

### **The EA Process**

The National Environmental Policy Act (NEPA) requires the Commission to take into account the environmental impacts that could result from an action whenever it considers the issuance of a Certificate of Public Convenience and Necessity. NEPA also requires us<sup>2</sup> to discover and address concerns the public may have about proposals. This process is referred to as "scoping." The main goal of the scoping process is to focus the analysis in the EA on the important environmental issues. By this notice, the Commission requests public comments on the scope of the issues to address in the EA. We will consider all filed comments during the preparation of the EA.

In the EA we will discuss impacts that could occur as a result of the construction and operation of the proposed project under these general headings:

- geology and soils;
- land use;
- socioeconomics;
- water resources, fisheries, and wetlands;
- cultural resources;
- vegetation and wildlife;
- endangered and threatened species;
- air quality and noise;
- public safety; and

---

<sup>1</sup> The appendices referenced in this notice will not appear in the Federal Register. Copies of appendices were sent to all those receiving this notice in the mail and are available at [www.ferc.gov](http://www.ferc.gov) using the link called "eLibrary" or from the Commission's Public Reference Room, 888 First Street NE, Washington, DC 20426, or call (202) 502-8371. For instructions on connecting to eLibrary, refer to the last page of this notice.

<sup>2</sup> "We," "us," and "our" refer to the environmental staff of the Commission's Office of Energy Projects.

- cumulative impacts.

We will also evaluate reasonable alternatives to the proposed project or portions of the project, and make recommendations on how to lessen or avoid impacts on the various resource areas.

The EA will present our independent analysis of the issues. The EA will be available in the public record through eLibrary. Depending on the comments received during the scoping process, we may also publish and distribute the EA to the public for an allotted comment period. We will consider all comments on the EA before making our recommendations to the Commission. To ensure we have the opportunity to consider and address your comments, please carefully follow the instructions in the Public Participation section, beginning on page 2.

With this notice, we are asking agencies with jurisdiction by law and/or special expertise with respect to the environmental issues of this project to formally cooperate with us in the preparation of the EA.<sup>3</sup> Agencies that would like to request cooperating agency status should follow the instructions for filing comments provided under the Public Participation section of this notice.

### **Consultations Under Section 106 of the National Historic Preservation Act**

In accordance with the Advisory Council on Historic Preservation's implementing regulations for section 106 of the National Historic Preservation Act, we are using this notice to initiate consultation with the applicable State Historic Preservation Offices (SHPO), and to solicit their views and those of other government agencies, interested Indian tribes, and the public on the project's potential effects on historic properties.<sup>4</sup> We will define the project-specific Area of Potential Effects (APE) in consultation with the SHPO(s) as the project develops. On natural gas facility projects, the APE at a minimum encompasses all areas subject to ground disturbance (examples include construction right-of-way, contractor/pipe storage yards, compressor stations, and access roads). Our EA for this project will document our findings on the impacts on historic properties and summarize the status of consultations under section 106.

---

<sup>3</sup> The Council on Environmental Quality regulations addressing cooperating agency responsibilities are at Title 40, Code of Federal Regulations, Part 1501.6.

<sup>4</sup> The Advisory Council on Historic Preservation's regulations are at Title 36, Code of Federal Regulations, Part 800. Those regulations define historic properties as any prehistoric or historic district, site, building, structure, or object included in or eligible for inclusion in the National Register of Historic Places.

### **Environmental Mailing List**

The environmental mailing list includes federal, state, and local government representatives and agencies; elected officials; environmental and public interest groups; Native American Tribes; other interested parties; and local libraries and newspapers. This list also includes all affected landowners (as defined in the Commission's regulations) who are potential right-of-way grantors, whose property may be used temporarily for project purposes, or who own homes within certain distances of aboveground facilities, and anyone who submits comments on the project. We will update the environmental mailing list as the analysis proceeds to ensure that we send the information related to this environmental review to all individuals, organizations, and government entities interested in and/or potentially affected by the proposed project.

If we publish and distribute the EA, copies will be sent to the environmental mailing list for public review and comment. **If you would prefer to receive a paper copy of the document instead of the CD version or would like to remove your name from the mailing list, please return the attached Information Request (appendix 2).**

### **Becoming an Intervenor**

In addition to involvement in the EA scoping process, you may want to become an "intervenor" which is an official party to the Commission's proceeding. Intervenors play a more formal role in the process and are able to file briefs, appear at hearings, and be heard by the courts if they choose to appeal the Commission's final ruling. An intervenor formally participates in the proceeding by filing a request to intervene. Instructions for becoming an intervenor are in the "Document-less Intervention Guide" under the "e-filing" link on the Commission's website. Motions to intervene are more fully described at <http://www.ferc.gov/resources/guides/how-to/intervene.asp>.

### **Additional Information**

Additional information about the project is available from the Commission's Office of External Affairs, at **(866) 208-FERC**, or on the FERC website at [www.ferc.gov](http://www.ferc.gov) using the "eLibrary" link. Click on the eLibrary link, click on "General Search" and enter the docket number, excluding the last three digits in the Docket Number field (i.e., CP18-6). Be sure you have selected an appropriate date range. For assistance, please contact FERC Online Support at [FercOnlineSupport@ferc.gov](mailto:FercOnlineSupport@ferc.gov) or toll free at (866) 208-3676, or for TTY, contact (202) 502-8659. The eLibrary link also provides access to the texts of formal documents issued by the Commission, such as orders, notices, and rulemakings.

In addition, the Commission offers a free service called eSubscription which allows you to keep track of all formal issuances and submittals in specific dockets. This

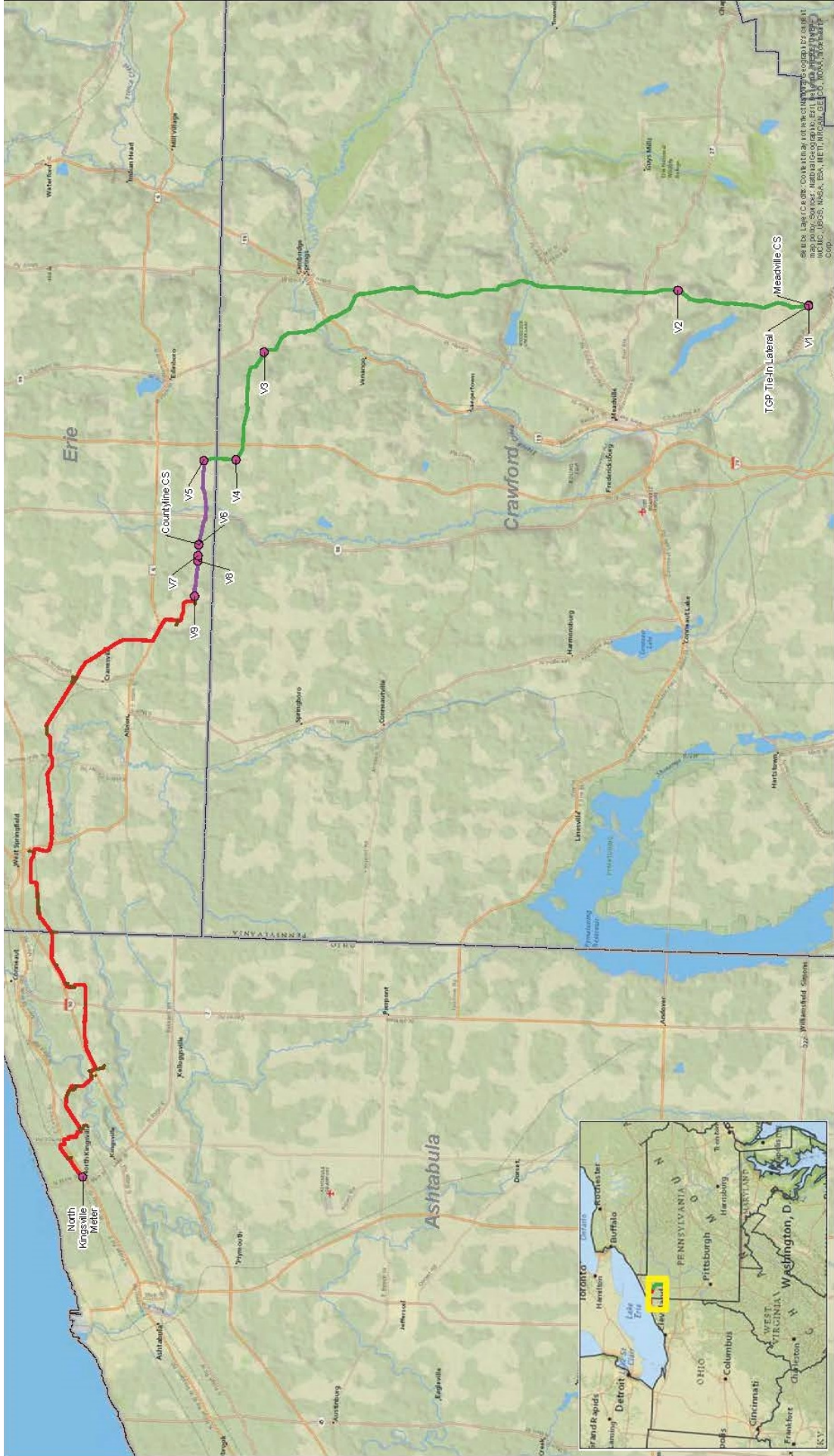
can reduce the amount of time you spend researching proceedings by automatically providing you with notification of these filings, document summaries, and direct links to the documents. Go to [www.ferc.gov/docs-filing/esubscription.asp](http://www.ferc.gov/docs-filing/esubscription.asp).

Finally, public sessions or site visits will be posted on the Commission's calendar located at [www.ferc.gov/EventCalendar/EventsList.aspx](http://www.ferc.gov/EventCalendar/EventsList.aspx) along with other related information.

Kimberly D. Bose,  
Secretary

# Appendix 1





© 2018 by The Ohio State University. All rights reserved. This map is a technical drawing and is not to be used for any other purpose without the express written consent of The Ohio State University. The Ohio State University is not responsible for any errors or omissions in this map.

PROJECT NO.	20180974	FIGURE	1-1
DR. AWN:	9.27.2017	Project Overview	
DRAWN BY:	JTW	Risberg Line Project	
CHECKED BY:	AD, NE	RH energys, LLC	
FILE NAME:	Fig. 1-1 Risberg Line Project - Overview	Ohio and Pennsylvania	



0 1 2 Miles

1:200,000

**Legend**

- Risberg Pipeline Alignment
- Existing 8-inch Line
- Existing 12-inch Line
- Facility Location
- Access Road
- County Boundary

## Appendix 2

**INFORMATION REQUEST**

**Risberg Line Project**

**Name** \_\_\_\_\_

**Agency** \_\_\_\_\_

**Address** \_\_\_\_\_

**City** \_\_\_\_\_ **State** \_\_\_\_\_ **Zip Code** \_\_\_\_\_

**Please send me a paper copy of the published NEPA document**

**Please remove my name from the mailing list**

---

**FROM** \_\_\_\_\_

\_\_\_\_\_

\_\_\_\_\_

\_\_\_\_\_

**ATTN: OEP - Gas 2, PJ - 11.2**  
**Federal Energy Regulatory Commission**  
**888 First Street NE**  
**Washington, DC 20426**

*(Docket No. CP18-6-000 Risberg Line Project)*

**Staple or Tape Here**